



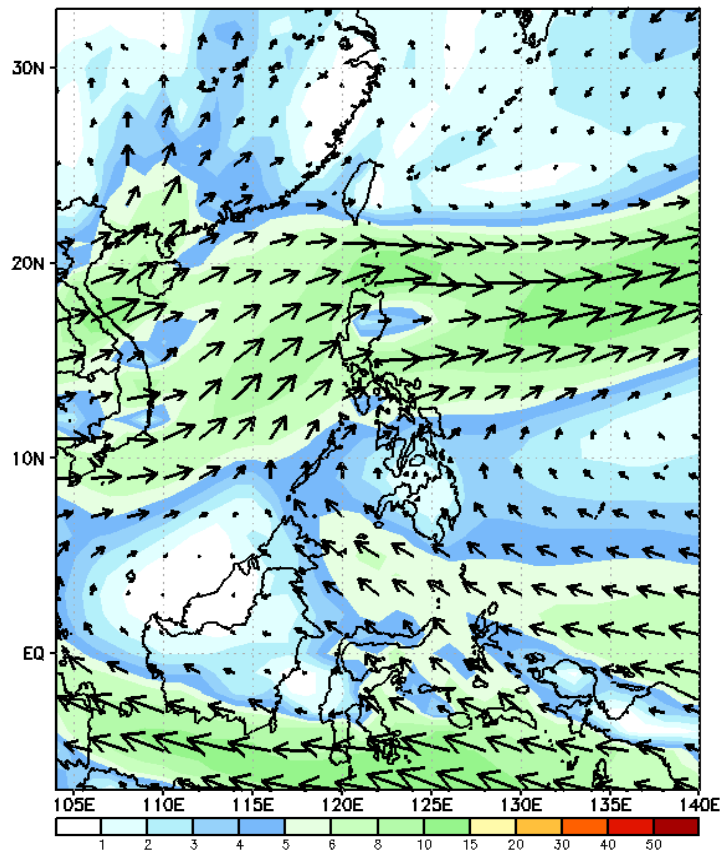
Week 1 & Week 2 Forecast for the Philippines using GEFS Model



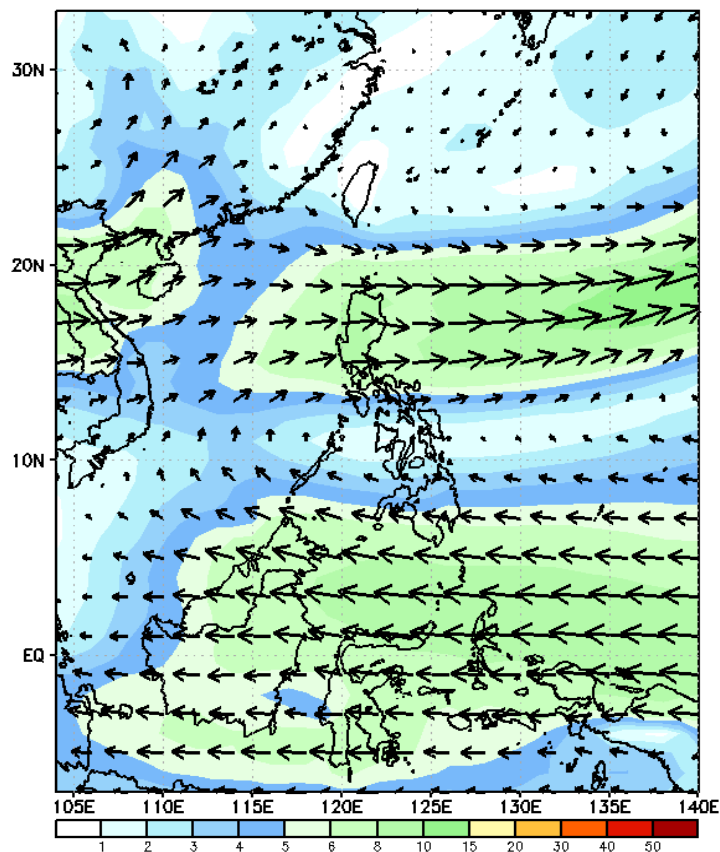
GEFS Week-1 Wind Forecasts:

Week 1: Aug 05-11, 2024

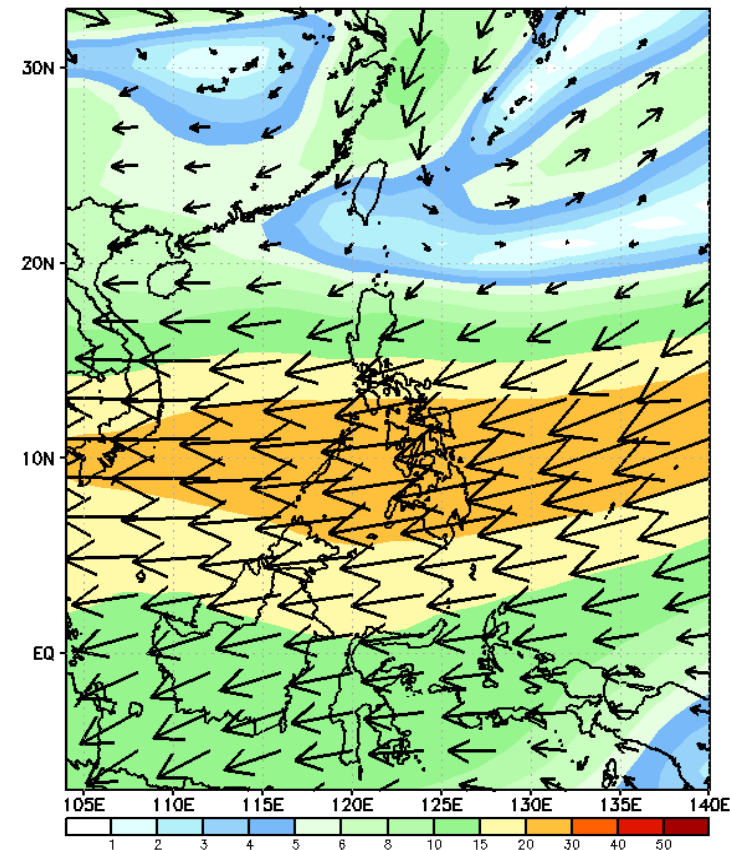
GEFS Week-1 850-hPa Wind Total
Valid: 20240807 - 20240813



GEFS Week-1 700-hPa Wind Total
Valid: 20240807 - 20240813

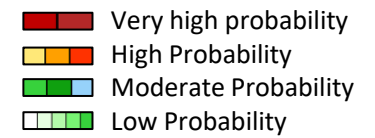


GEFS Week-1 200-hPa Wind Total
Valid: 20240807 - 20240813



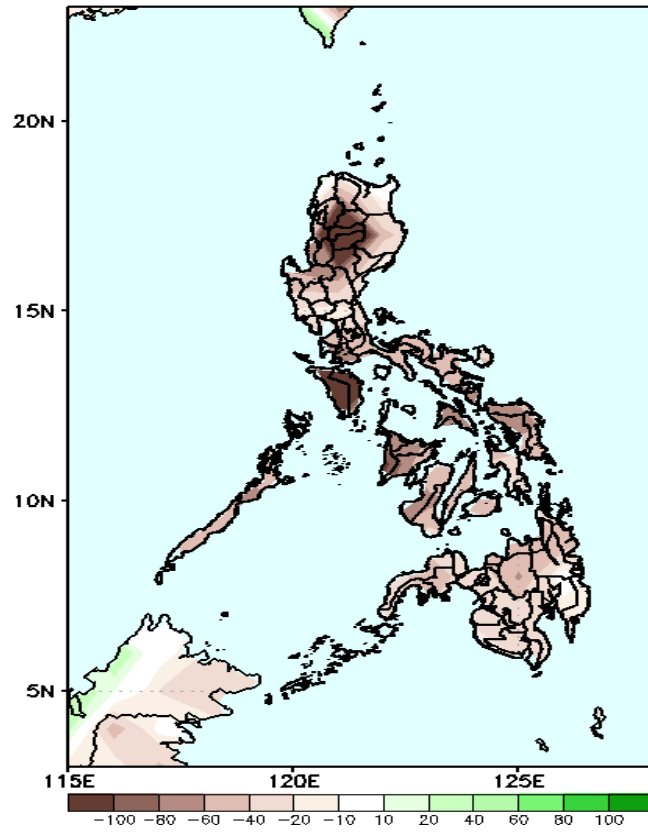
Southwest Monsoon affecting the western sections of the country. Easterlies affecting the rest of the country during the forecast period

Precipitation Anomaly and Exceedance Probability > 25/50 mm



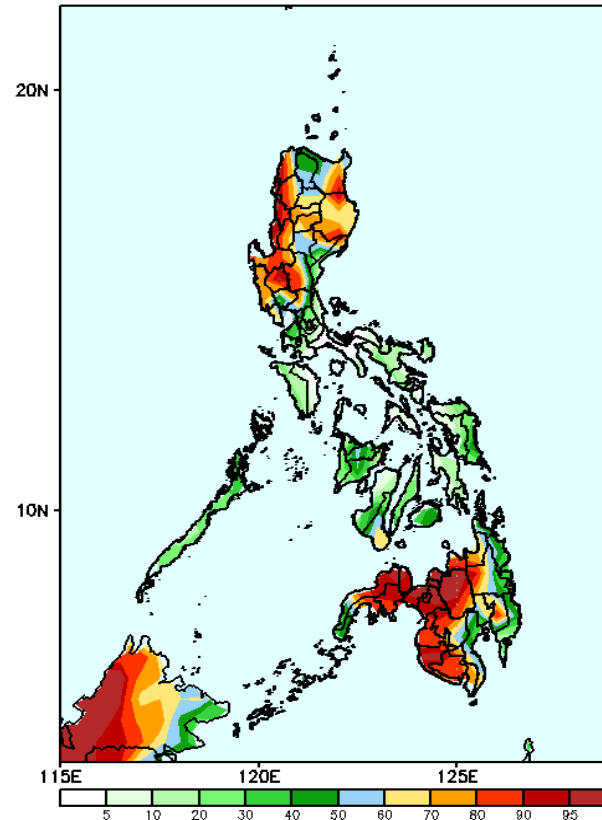
Week 1: Aug 05-11, 2024

GEFS Week-1 Precip Anomaly
Valid: 20240807 - 20240813



Rainfall deficit of more than 100mm in most of CAR and Mindoro Provinces and 20-80mm for the rest of the country

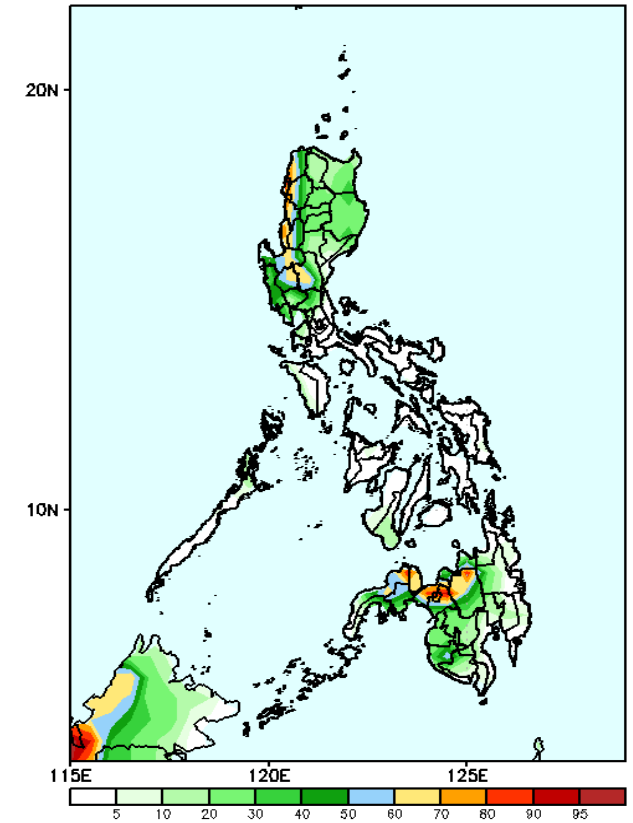
GEFS Week-1 Exceedance Prob. > 25mm
Valid: 20240807 - 20240813



Probability to Exceed 25mm

- High to very high over most of Western and Central Mindanao;
- Moderate to high over Northern and Central Luzon, the westernmost of Mindanao, Caraga, and Davao Region;
- Low to moderate over the rest of the country.

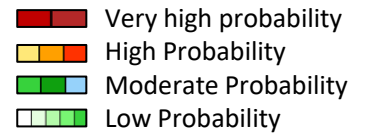
GEFS Week-1 Exceedance Prob. > 50mm
Valid: 20240807 - 20240813



Probability to Exceed 50mm

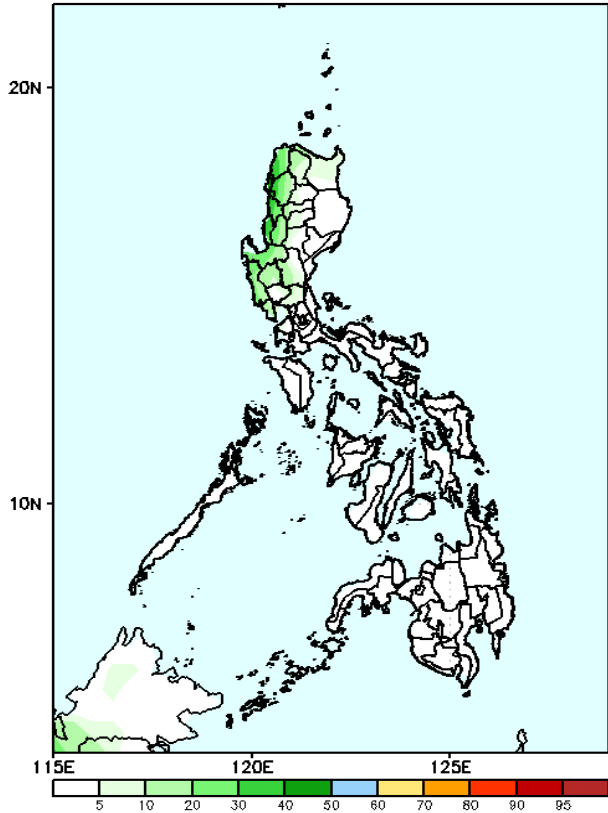
- Moderate to high over the western section of Northern Luzon, Tarlac, western section of Nueva Ecija, northern portion of Bukidnon, Lanao provinces, Misamis Occidental, and the eastern section of Zamboanga del Norte;
- Low to moderate over the rest of the country.

Exceedance Probability > 100/150/200 mm



Week 1: Aug 05-11, 2024

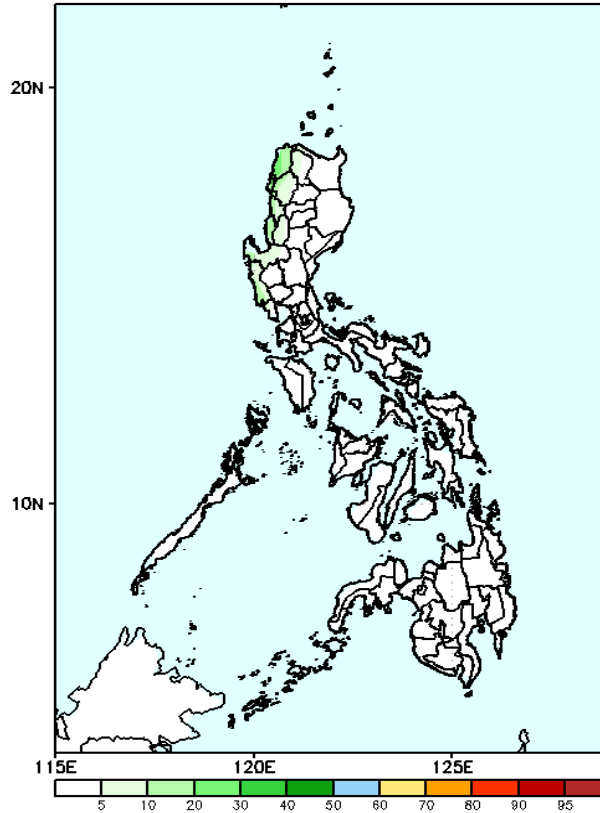
GEFS Week-1 Exceedance Prob. > 100mm
Valid: 20240807 - 20240813



Probability to Exceed 100mm

- Low across the country.

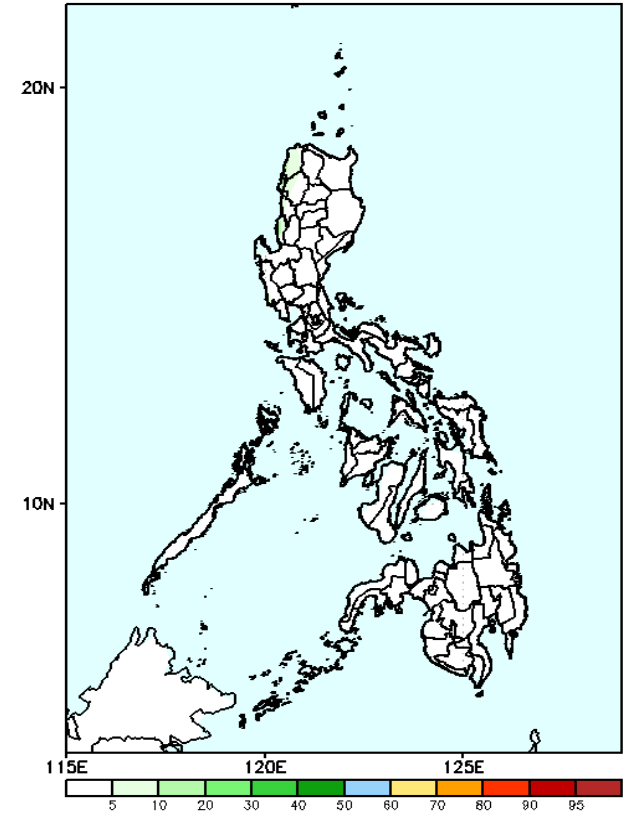
GEFS Week-1 Exceedance Prob. > 150mm
Valid: 20240807 - 20240813



Probability to Exceed 150mm

- Low across the country.

GEFS Week-1 Exceedance Prob. > 200mm
Valid: 20240807 - 20240813



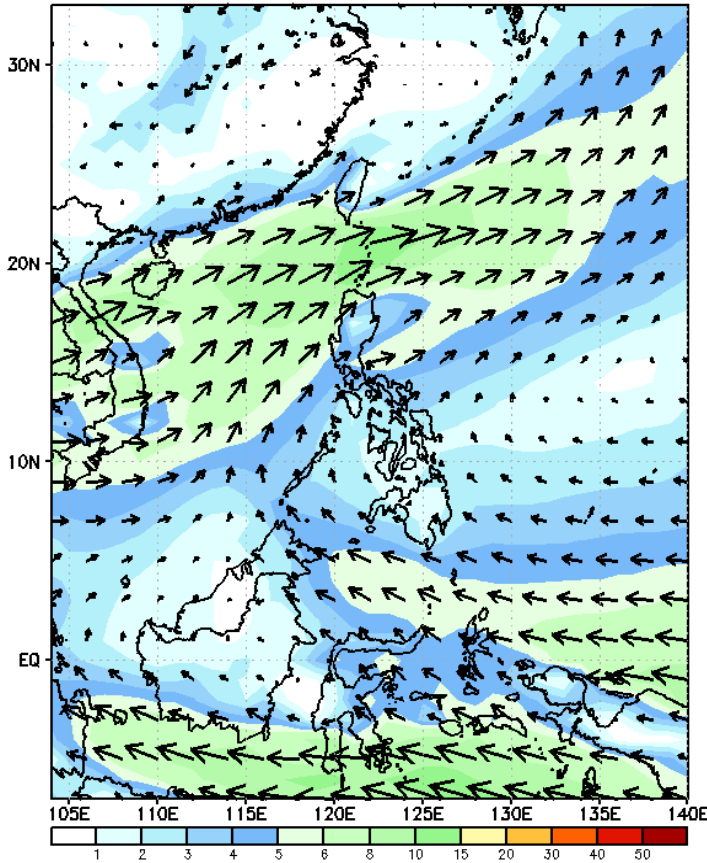
Probability to Exceed 200mm

- Low across the country.

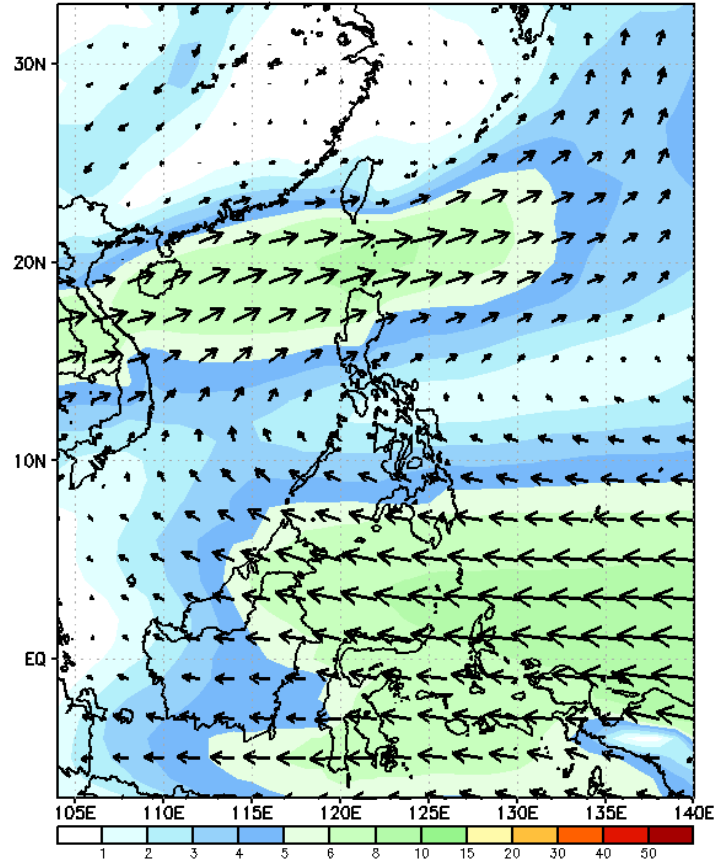
GEFS Week-2 Wind Forecasts:

Week 2: Aug 12-18, 2024

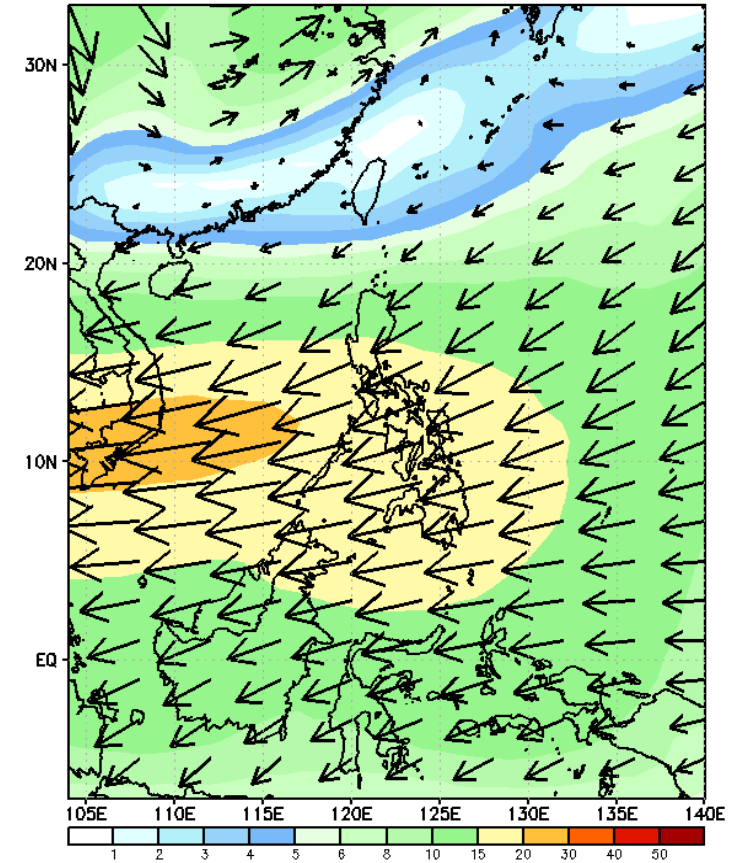
GEFS Week-2 850-hPa Wind Total
Valid: 20240814 - 20240820



GEFS Week-2 700-hPa Wind Total
Valid: 20240814 - 20240820

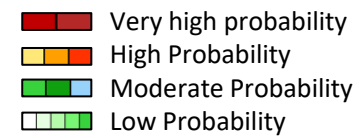


GEFS Week-2 200-hPa Wind Total
Valid: 20240814 - 20240820



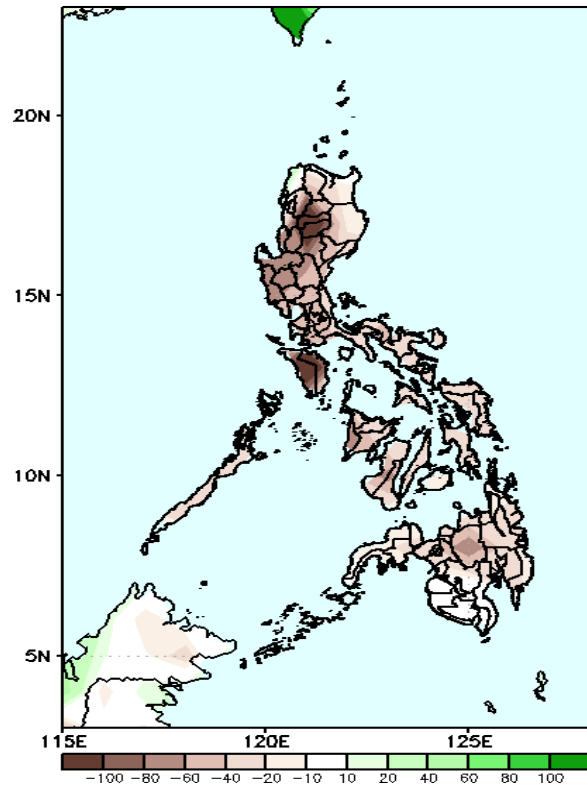
Southwest Monsoon affecting western sections of the country. Easterlies affecting the rest of the country during the forecast period

Precipitation Anomaly and Exceedance Probability > 25/50 mm



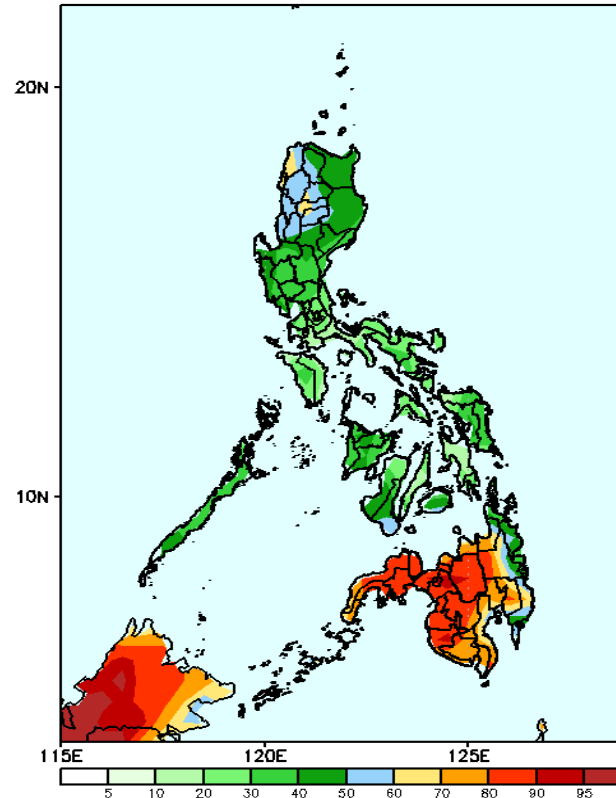
Week 2: Aug 12-18, 2024

GEFS Week-2 Precip Anomaly
Valid: 20240814 - 20240820



Rainfall deficit of 20-80mm is expected in most part of the country.

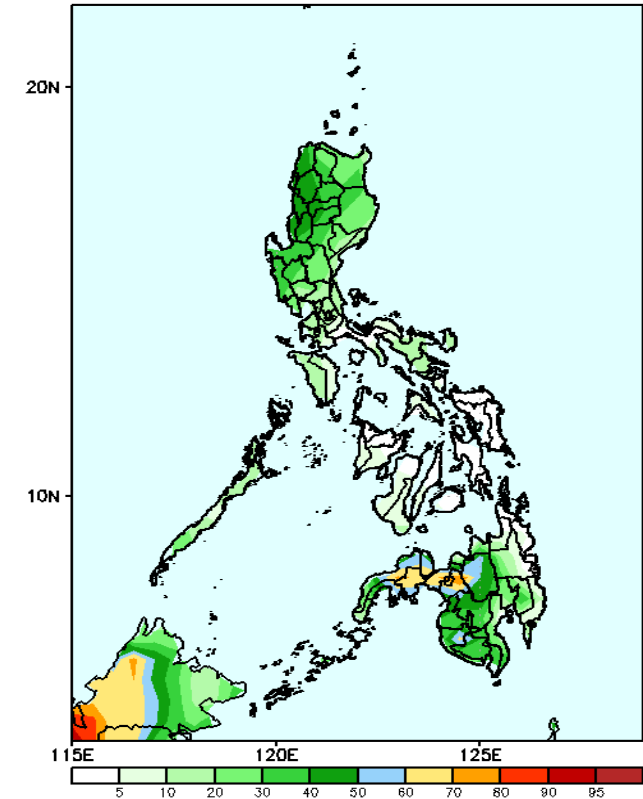
GEFS Week-2 Exceedance Prob. > 25mm
Valid: 20240814 - 20240820



Probability to Exceed 25mm

- Moderate to high over Ilocos Region, CAR and most parts of Mindanao;
- Low to moderate over the rest of the country.

GEFS Week-2 Exceedance Prob. > 50mm
Valid: 20240814 - 20240820



Probability to Exceed 50mm

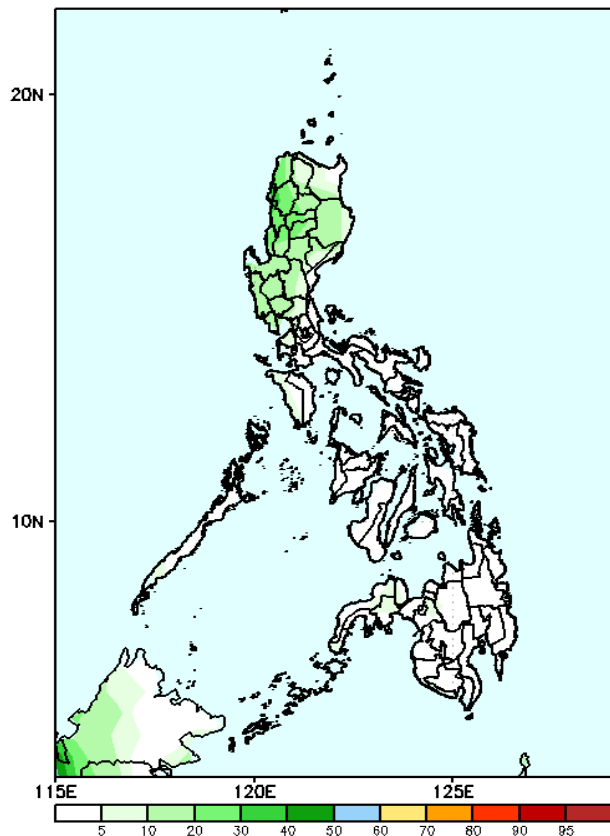
- Moderate to high over Bukidnon, Lanao Provinces and most of Zamboanga Peninsula;
- Low over Visayas.

Exceedance Probability > 100/150/200 mm

- Very high probability
- High Probability
- Moderate Probability
- Low Probability

Week 2: Aug 12-18, 2024

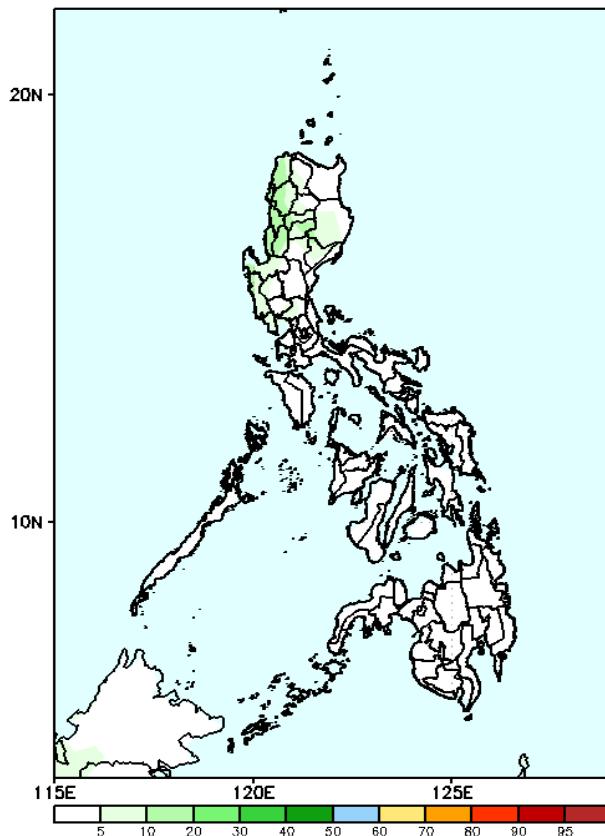
GEFS Week-2 Exceedance Prob. > 100mm
Valid: 20240814 - 20240820



Probability to Exceed 100mm

- Low probability across the country.

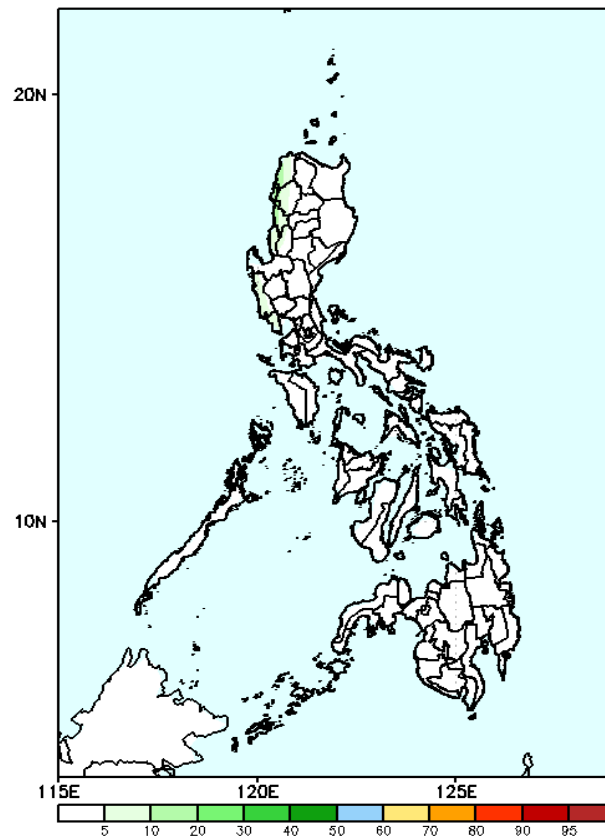
GEFS Week-2 Exceedance Prob. > 150mm
Valid: 20240814 - 20240820



Probability to Exceed 150mm

- Low probability across the country.

GEFS Week-2 Exceedance Prob. > 200mm
Valid: 20240814 - 20240820

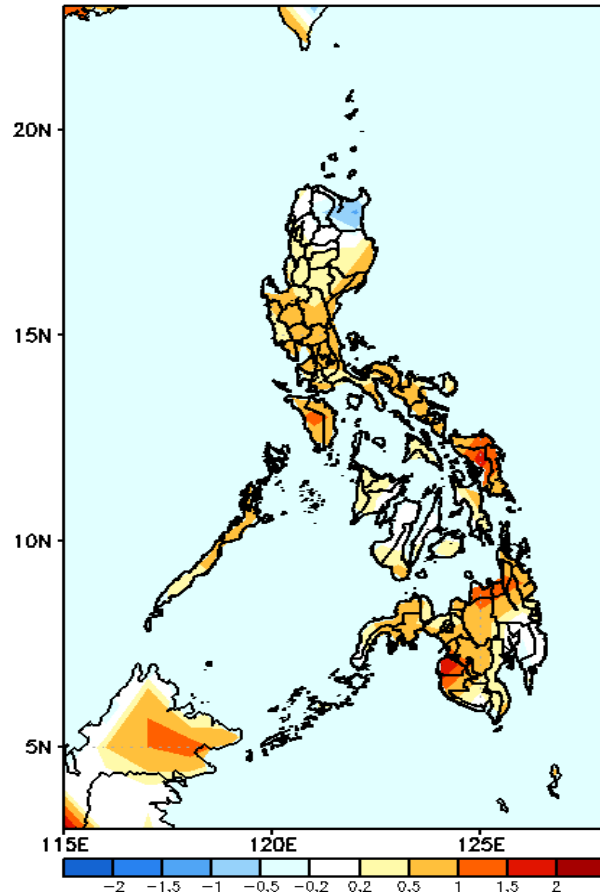


Probability to Exceed 200mm

- Low probability across the country.

GEFS Week-1 & 2 Forecasts: T2m Anomaly

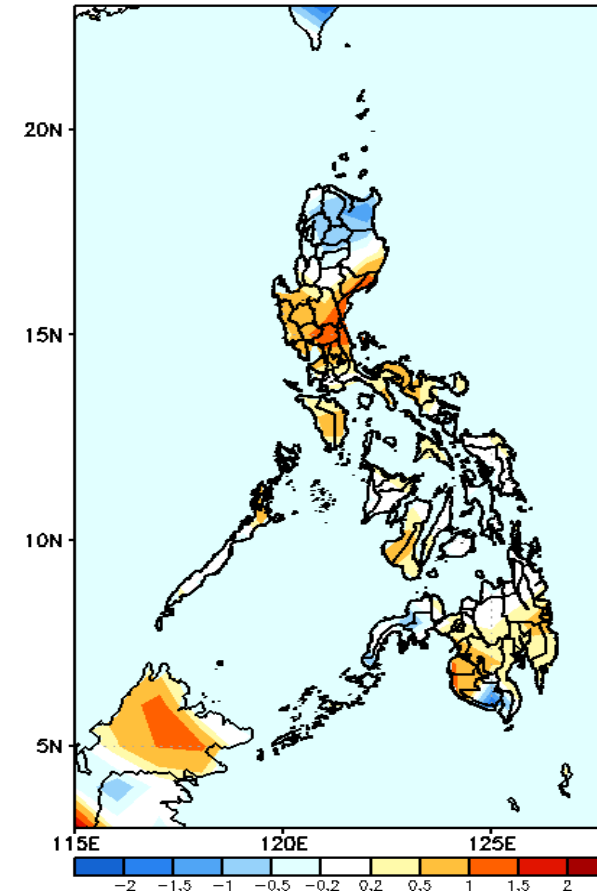
GEFS Week-1 T2m Anomaly
Valid: 20240807 - 20240813



2m Temperature Week 1: Aug 05-11, 2024

Near to warmer surface air temperature will likely be experienced in most parts of the country except in Cagayan and Apayao where slightly cooler than average surface air temperature is expected.

GEFS Week-2 T2m Anomaly
Valid: 20240814 - 20240820



2m Temperature Week 2: Aug 12-18, 2024

Near to slightly warmer surface air temperature will likely be experienced in most parts of the country except in northern Luzon, South Cotabato and Zamboanga Peninsula where slightly cooler than average surface air temperature is expected.